

Software Quick Start (Quick Glance)

1



Insert the **EyeTech USB Drive** into an available **USB Port** on your computer.

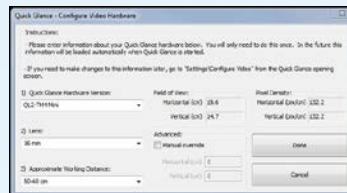
2

Double-click on the Installer icon on the flash drive and follow the on-screen prompts. Accept all defaults. The installer will place a Quick Glance icon on your desktop. Double-click to begin.



3

Hardware settings are pre-set for optimum performance. Verify that you are at approximately the correct distance of 50-60cm from the eye tracker, then click **Done**.



Note: You can revisit the configuration screen through the QuickGlance settings: **Home>Settings>Camera Tab> Geometry Settings**

4

The **QuickGlance** Home Screen should now appear showing a live image. The green lights on the eye tracker device will turn on when the system begins tracking your eyes.



5

Click **Calibrate**, then look at the center of each target as it appears. After calibrating, the system will enable eye tracking and you will have control of the cursor with your eyes!

